



LBS 2023  
Field  
Trips

**Liverpool Botanic**





Wild Cherry

Saturday April  
15: Wepre  
Wood,  
Flintshire



Dark-edged Bee Fly

14 members and friends.  
Over 75 plants seen. Plus, bee  
flies, mosses, fungi, birds and  
four butterfly species.





Cowslip



Butterbur



Lesser Celandine

Saturday April 15: Wepre Wood, Flintshire



Ewloe Castle



Wild Arum or Cuckoo Pint

Saturday April 15: Wepre Wood,  
Flintshire



Red Currant in flower



Barren Strawberry



Opposite-leaved Golden-Saxifrage



Greater Stitchwort

Saturday April 15: Wepre Wood, Flintshire





Wood Anemone

Saturday April 15: Wepre Wood, Flintshire





Great Horsetail

Saturday April 15: Wepre Wood, Flintshire





Enchanter's Nightshade

Saturday April 15: Wepre Wood,  
Flintshire







Bilberry



Wood Dock

Saturday April 15: Wepre Wood,  
Flintshire







Cuckoo Flower or Lady's Smock

Saturday April 29: Dibbinsdale

14 members and friends.  
Over 100 plants, birds, insects etc.  
Pocket Plum galls, Mascara Disco and  
Snowy Disco Fungus.





Lesser Celandine



Wood Speedwell



Wood Anemone

Saturday April 29: Dibbinsdale



Fringe Cups *Tellima grandiflora*



Cowslip



Common Dog Violet

Saturday April 29:  
Dibbinsdale



Snowy Disco



Mascara Disco





Saturday April 29:  
Dibbinsdale





Apple blossom



Great Scented Liverwort  
*Conocephalum conicum*

Saturday April 29:  
Dibbinsdale





Water Dock



Ring Peltia *Pellia neesiana*



Bog Bean and Rigid Hornwort

Saturday April 29: Dibbinsdale



Saturday  
April 29:  
Dibbinsdale



**Opposite-leaved Golden Saxifrage**  
*Chrysosplenium oppositifolium*



**Great Wood-rush** *Luzula sylvatica*



**Monkey-puzzle** *Araucaria araucana*







**Silver-studded Blue**  
*Plebejus argus* ssp. *caernensis*, female



**Saturday June  
3: Great  
Orme,  
Llandudno**

18 members and friends.  
Over 100 plants, including Hoary Rockrose,  
Ivy Broomrape, Nottingham Catchfly, Spotted  
Cat's-ear, Strawberry Tree, Dark Red  
Helleborine and Small-leaved Sweet Briar  
Great Orme forms of Silver-studded Blue and  
Grayling



**Bloody Cranesbill**

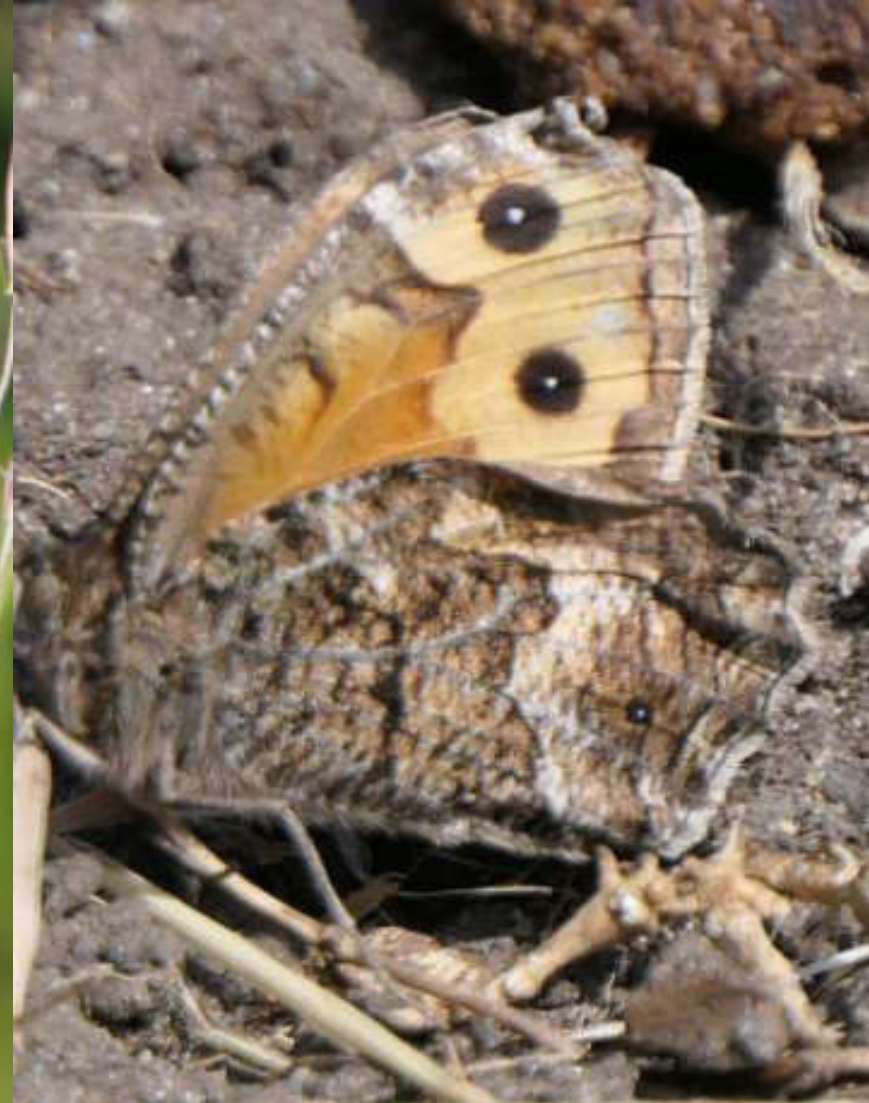




**Ivy Broomrape** *Orobanchae hederaceae*



**Pyramidal Orchid**



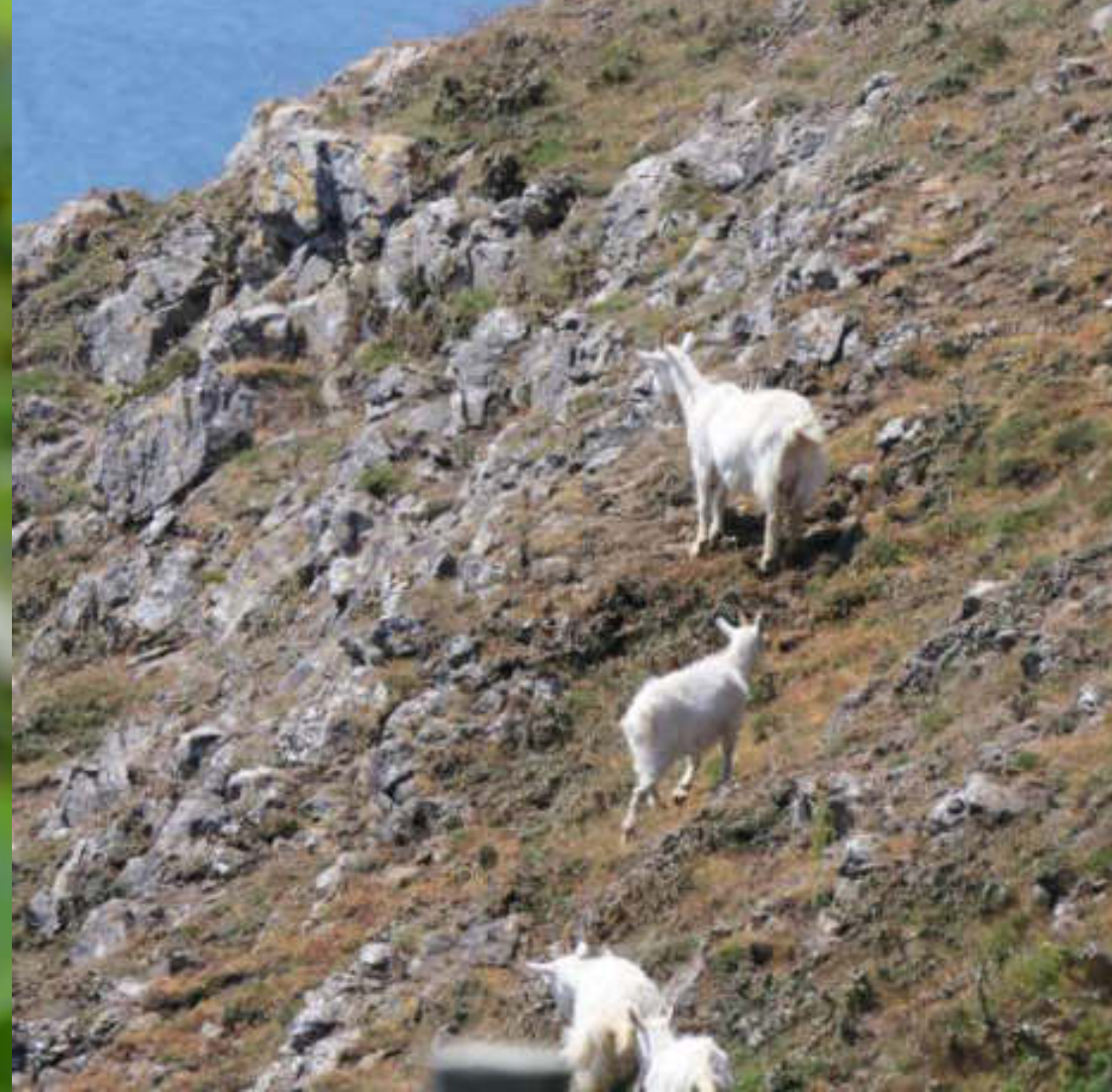
Great Orme form of the **Grayling**  
*Hipparchia semele* ssp. *thyone*

Saturday June 3: Great Orme, Llandudno





Introduced Jordan's Hawkweed *Hieracium exotericum* agg



Saturday June 3: Great Orme, Llandudno





**Nottingham Catchfly** *Silene nutans*



**Spotted Cat's-ear** *Hypochaeris maculata*



**Small-leaved Sweet Briar** *Rosa agrestis*

Saturday June 3: Great Orme, Llandudno





**Wild Madder** *Rubia peregrina*



**Great Orme Silver-studded Blue**  
*Plebejus argus* ssp. *caernensis*, male



**Kashmiri Goat**



Saturday June 3: Great Orme, Llandudno





**Rock Spurrey** *Spergularia rupicola*



**Ivy Broomrape** *Orobanchae hederaceae*

Saturday June 3: Great Orme, Llandudno





Rock Samphire



Sea Fern Grass

Saturday June 3: Great Orme, Llandudno



# Saturday June 24: Liverpool City Centre

Ten members and friends





Saturday June  
24: Liverpool  
City Centre





# Saturday June 24: Liverpool City Centre

Greater Knapweed and Field Scabious



City Wildflower Meadow

A colourful home for wildlife

National  
Museums  
Liverpool



Vervain *Verbena officinalis* is escaping on to the pavement.







Shaggy Soldier



eleven Bee Orchid at Hunter Street

Saturday June 24: Liverpool City Centre





Greater Willowherb



Viper's Bugloss



Meadow Cranesbill

Saturday June 24: Liverpool City Centre





Everton Lock Up or Prince Rupert's Tower

Saturday June 24: Liverpool City  
Centre



Corncockle



Bladder Senna



Saturday  
June 24:  
Liverpool  
City  
Centre

Tulip Tree  
*Liriodendron tulipifera*



White Stonecrop



Common Poppy



Narrow-leaved Ash *Fraxinus  
angustifolia*



Mouse-ear Hawkweed







Chicory at Museum Meadow



Field Scabious by Everton Brow

Saturday June 24: Liverpool City Centre

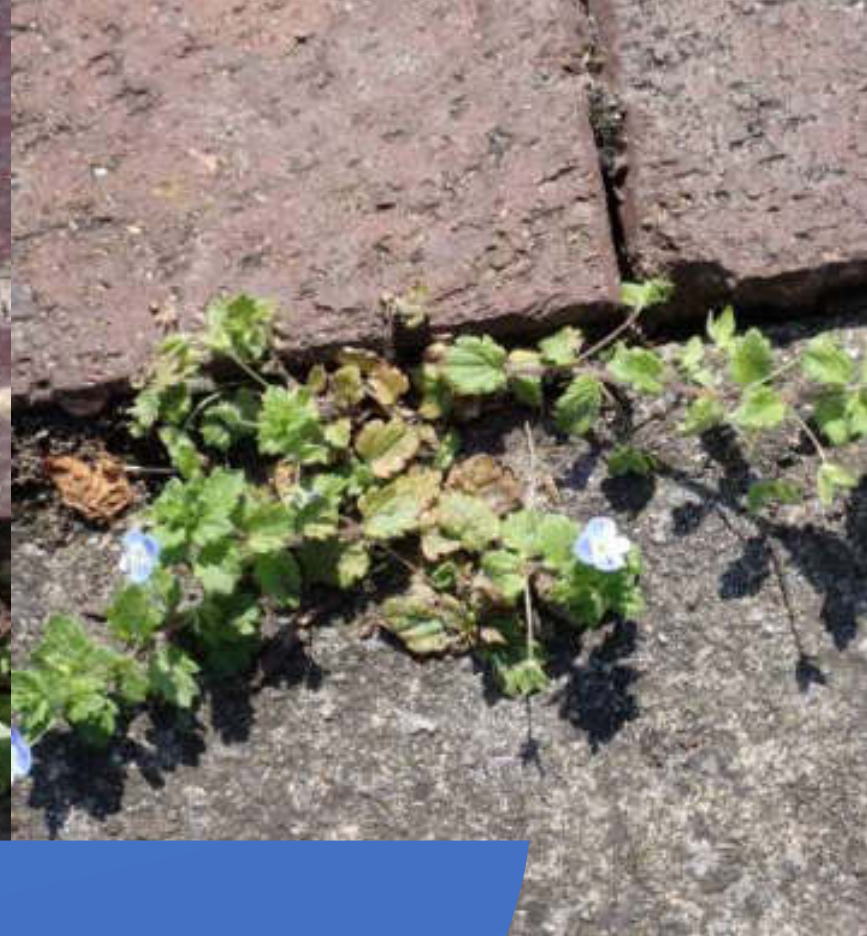




Eastern Rocket



Scarlet Pimpernel



Common Field Speedwell

Saturday June 24: Liverpool City Centre





a nodular limestone of Lower Carboniferous age (about 350 Million years old) from North Wales with Fossil Coral.



Crown Vetch *Securigera varia*



Rat's-tail Fescue *Vulpia myuros*

Saturday June 24: Liverpool City Centre





Wall Speedwell



Tree of Heaven (or for some  
Tree of Hell) *Ailanthus altissima*



Common Mallow



Procumbent Pearlwort



Wall-rue and  
Hartstongue Ferns



Black Spleenwort



Tree of Heaven (or for some  
Tree of Hell) *Ailanthus altissima*

Saturday June 24:  
Liverpool City Centre





**Burnet-saxifrage**

*Pimpinella saxifraga*

Saturday July 29: Wallasey Gunsite dunes

Leader and photos Robert Freeth





**Silky-leaved Osier** *Salix x holosericea* (*S. cinerea* x *S. viminalis*)



**Sheep's-bit** *Jasione montana*

Saturday July 29:





Saturday July 29: Wallasey Gunsite dunes

Hare's-tail *Lagurus ovatus*





Lucerne with Brimstone



Isle-of-Man Cabbage  
*Coincya monensis ssp. monensis*



Harebell

Saturday July 29:  
Wallasey Gunsite dunes







*Oenothera x brittanica*



**Isle of Man Cabbage**  
*Coincya monensis subsp.*  
*monensis*

## Saturday July 15: Crosby beach

Seven members led by Steve Cross braved the weather to see the dune and garden escape plants of this site



Saturday July  
15: Crosby  
beach



Greater, or Flowering Sea Kale  
*Crambe cordifolia*

Rough Hawkbit





Saturday July  
15: Crosby



Dune Wormwood



Dune Wormwood





Wild Carrot



Powell's Cape-lily *Crinum* × *powellii*



White Melilot

Saturday July 15: Crosby beach





Sea Beet



Purple Toadflax pink form 'Canon Went'



Isle of Man Cabbage  
*Coincya monensis* subsp.  
*monensis*

Saturday July 15: Crosby beach





Strawberry Clover



Evening Primrose hybrid Large x Small-flowered  
*Oenothera x brittanica*



Sea Sandwort *Honckenya peploides*

Saturday July 15: Crosby beach





White Campion  
with Campion Anther Smut  
*Microbotryum lychnidis-dioicae*



Fennel



Black Horehound

Saturday July 15: Crosby beach





Curled Dock (*littoreus*)



Sea Holly Broomrape  
*Orobanche minor* subsp.  
*minor* var. *pseudoamethystea*



Sea Holly

Saturday July 15  
Crosby beach





Field Bindweed



Soapwort



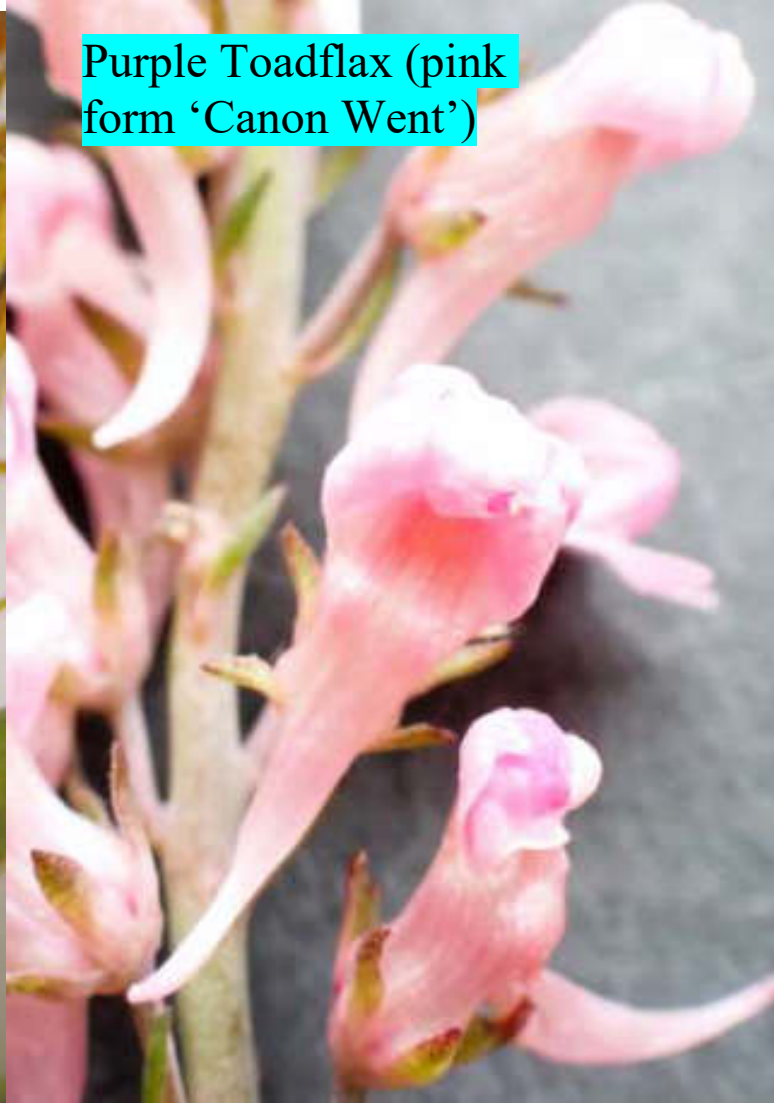
Pink Sorrel

Saturday July 15  
Crosby beach





D'Estang's St. Johns Wort



Purple Toadflax (pink form 'Canon Went')



Marsh Arrowgrass

Saturday July 15  
Crosby beach





Sea Holly

Saturday July 15: Crosby beach



Sea Club Rush



Haresfoot  
Clover



Robin's Pin Cushion Gall or Bedeguar *Diplolepis rosae*



Common Fleabane

- Saturday August 5:
- Gowy Meadows

Six hardy botanists, led by John Crowder braved the weather





Red Bartsia



Bristly Oxtongue *Picris echioides*



Along the Gowy

## Saturday August 5: Gowy Meadows



**Orange Balsam** *Impatiens capensis*



**Water Forget-me-not** *Myosotis scorpioides*



**Canadian Waterweed** *Elodea canadensis*



**Saturday August 5:  
Gowy Meadows**







Short-winged Conehead Bush Cricket *Conocephalus dorsalis*



hybrid Woundwort *Stachys x ambigua*

Saturday August 5: Gowy Meadows





**Pink-flowered Water-speedwell**  
*Veronica catenata*



**Water Chickweed** *Stellaria aquatica*  
(= *Myosoton aquaticum*)

**Saturday August 5: Gowy Meadows**



**Yellow Waterlily** *Nuphar lutea*



**Water Pepper** *Persicaria hydropiper*

Saturday August 5: Gowy Meadows







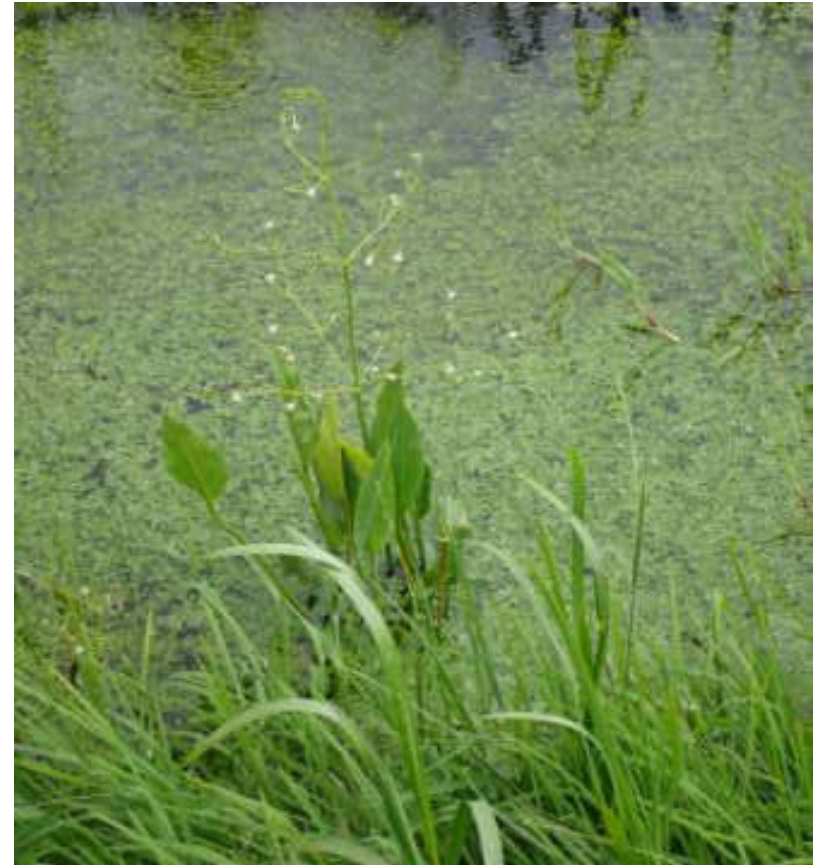
**Branched Bur-reed**  
*Sparganium erectum*



**Artichoke Gall**



**Bristly Oxtongue** *Picris echioides*



**Common Water Plantain**  
*Alisma plantago-aquatica*



**Male Common Blue**

---

**Saturday August 5: Gowy Meadows**





Buttonweed



Flax



Marsh  
Woundwort

# Saturday August 19: Hoylake Beach

Leader and photos Robert Freeth





Hard-grass

Saturday August 19: Hoylake Beach



Long-bracted Sedge





Sea Aster var. *flosculosus*



Whorlgrass

Saturday August 19: Hoylake Beach





Strawberry Clover



Rock Samphire



Rock Sea-spurrey

Saturday August 19: Hoylake Beach





Grass-of-Parnassus  
*Parnassia palustris*



caterpillar of the White Satin Moth *Leucoma salicis*



Saturday September 2: Ainsdale





Lesser Centaury



Frosted Orache *Atriplex laciniata*



Small-fruited Yellow-sedge  
*Carex oederi* (*C. viridula* ssp. *viridula*)

Saturday September 2: Ainsdale





**Ray's Knotgrass**

*Polygonum oxyspermum subsp. raii*



**Prickly Saltwort**

*Salsola kali*



**Strawberry Clover**

Saturday September 2: Ainsdale





Blue Fleabane

Saturday September 2: Ainsdale



Variegated Horsetail  
*Equisetum variegatum*



Sea  
Spurge





Sea Milkwort



Eyebright

Saturday September 2:  
Ainsdale



Sea Aster



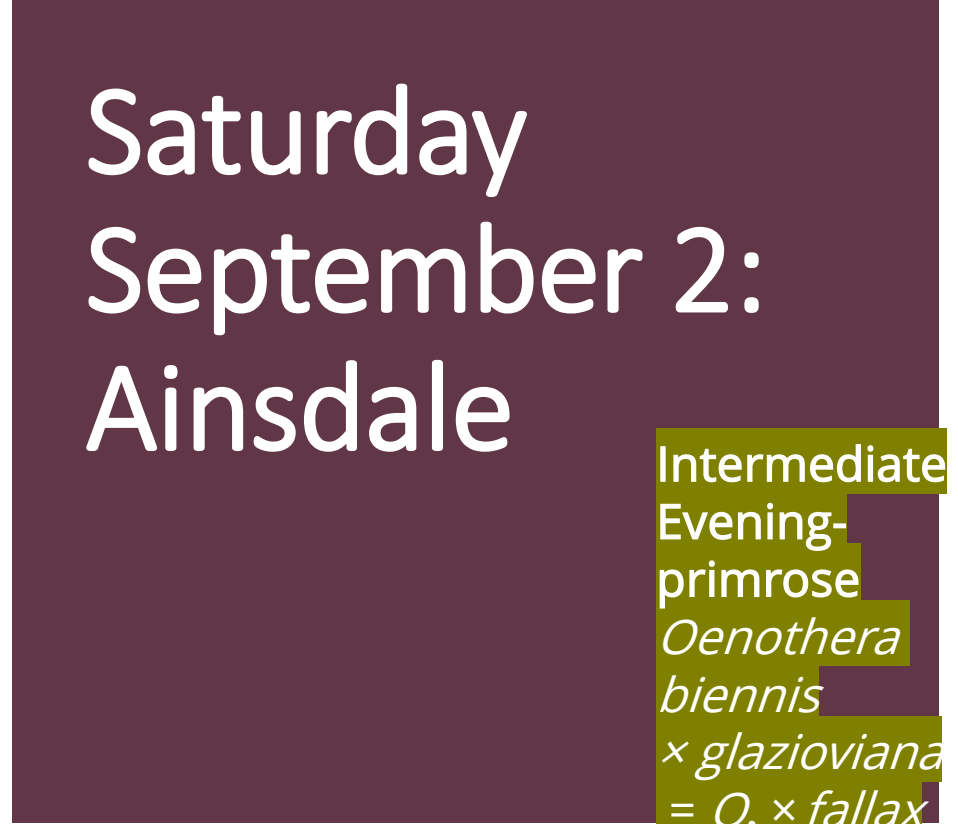
Rest  
Harrow



Yellow-  
wort



White form of Red Clover



Saturday  
September 2:  
Ainsdale

Intermediate  
Evening-  
primrose  
*Oenothera*  
*biennis*  
 $\times$  *glazioviana*  
 $= O. \times$  *fallax*



Water Mint





# Saturday September 16: Aughton

Twelve members and friends



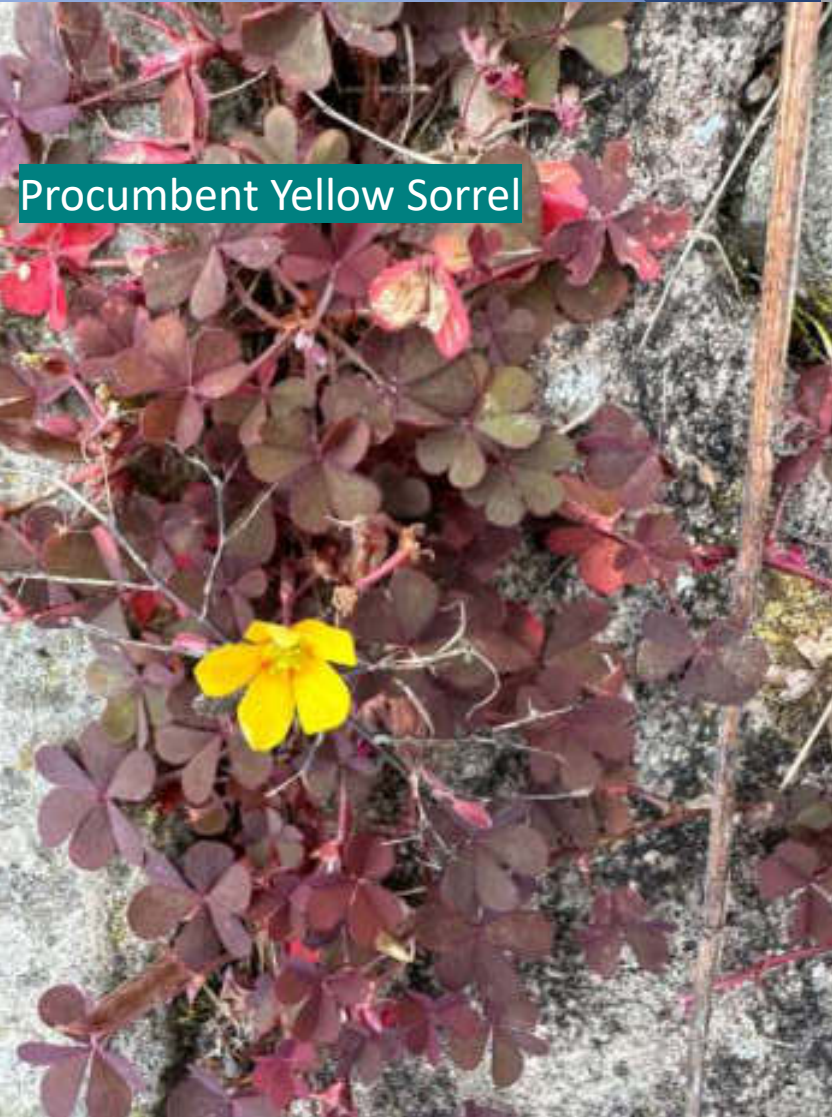
Lacy Phacelia *Phacelia tanacetifolia*



Alsike Clover



Saturday  
September 16:  
Aughton



Procumbent Yellow Sorrel







White form of Red Clover



Common Fiddleneck *Amsinckia micrantha*



St. Michael's

Saturday September 16: Aughton





Field Penny-cress



Wall Speedwell



Field Woundwort *Stachys arvensis*

Saturday September 16: Aughton





Black Bryony in fruit



Purple Loosestrife



Field Mouse-ear  
*Cerastium arvense*

Saturday September 16: Aughton





Great Horsetail  
*Equisetum telmateia*



Springy Turf-moss  
*Rhytidiadelphus squarrosus*



Green Shield Bug

Saturday September 16: Aughton





*Oxalis tetraphylla* 'Iron Cross'



Field Pansy



Wild Radish

Saturday September 16: Aughton





**Meadow Cranesbill**  
*Geranium pratense*



**Sweet Chestnut**



**American Red Oak *Quercus rubra***  
comparison with native oak

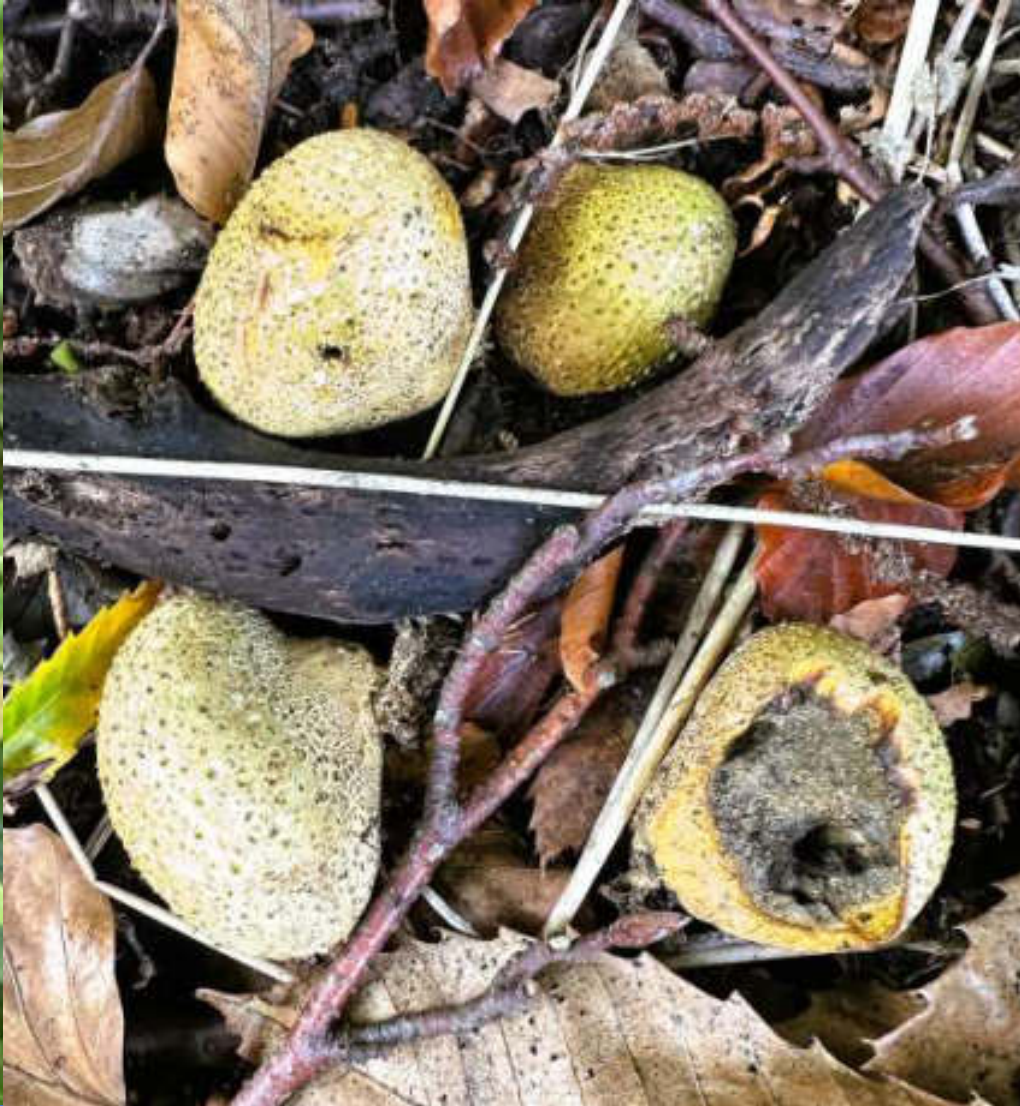
Saturday October 21: Eastham Country Park Fungus Foray

Eight members  
and friends





Common Figwort



Common Earthballs



Fly Agaric

Saturday October 21: Eastham Country Park Fungus Foray

Eight members  
and friends





Scots Pine



Hairy Curtain Crust  
*Stereum hirsutum*



Old Man's Beard  
or Traveller's Joy  
*Clematis vitalba*

Saturday October 21:  
Eastham Country Park Fungus Foray

c. 159 species were seen on the day.





**Common Earthball**  
*Scleroderma citrinum*



**Artists Bracket**  
*Ganoderma applanatum*



**Black Bulgar** *Bulgaria inquinans*

Saturday October 21:  
Eastham Country Park Fungus Foray

We saw 32 Trees and Shrubs,  
46 other plants, 4 ferns, 6 mosses,  
1 algae, 5 lichens and 30 fungi





Purple Jellydisc *Ascocoryne sarcoides*



Birch Polypore *Piptoporus betulinus*  
(= *Fomitopsis betulina*)

Eastham  
Ferry

Saturday October 21: Eastham  
Country Park Fungus Foray







**Bracken Map**  
*Rhopographus filicinus*



**Slime Mould**  
*Dictydiaethalium plumbeum*  
in the plasmodium stage



**Hairy Curtain Crust**  
*Stereum hirsutum*

Saturday October 21: Eastham Country Park Fungus Foray

Also noted were 7 mildews, rusts and spots, 1 mammal, 15 birds and 13 Invertebrates.





**Hairy Curtain Crust**  
*Stereum hirsutum*



**Turkeytail**  
*Trametes versicolor*



**Birch Woodward** *Annulohypoxylon multifforme* (= *Hypoxylon multifforme*)



**Sulphur Tuft**  
*Hypholoma fasciculare*

**Saturday October 21: Eastham  
Country Park Fungus Foray**